

CDC42/RHO/RAC Antibody

Catalog No: #36743

Orders: order@signalwayantibody.comSupport: tech@signalwayantibody.com

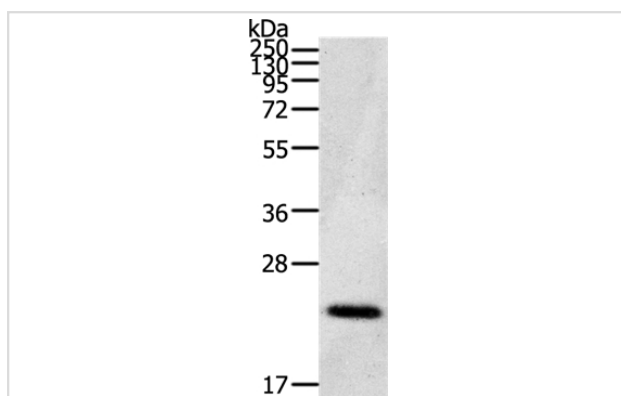
Description

Product Name	CDC42/RHO/RAC Antibody
Host Species	Rabbit
Clonality	Polyclonal
Purification	Antigen affinity purification.
Applications	WB
Species Reactivity	Hu Ms Rt
Specificity	The antibody detects endogenous levels of total CDC42/RHO/RAC protein.
Immunogen Type	Peptide
Immunogen Description	Synthetic peptide corresponding to a region derived from internal residues of human Cell division cycle 42
Target Name	CDC42-RHO-RAC
Other Names	G25K; CDC42Hs
Accession No.	Swiss-Prot#: P60953NCBI Gene ID: 998Gene Accssion: NP_001782
Uniprot	P60953
GeneID	998;
SDS-PAGE MW	23kd
Concentration	0.5mg/ml
Formulation	Rabbit IgG in pH7.4 PBS, 0.05% NaN ₃ , 40% Glycerol.
Storage	Store at -20°C

Application Details

Western blotting: 1:200-1:1000

Images



Gel: 12%SDS-PAGE
 Lysates (from left to right): Human fetal brain tissue
 Amount of lysate: 40ug per lane
 Primary antibody: 1/200 dilution
 Secondary antibody dilution: 1/8000
 Exposure time: 10 minutes

Background

The protein encoded by this gene is a small GTPase of the Rho-subfamily, which regulates signaling pathways that control diverse cellular functions including cell morphology, migration, endocytosis and cell cycle progression. This protein is highly similar to *Saccharomyces cerevisiae* Cdc 42, and is

able to complement the yeast *cdc42-1* mutant. The product of oncogene Dbl was reported to specifically catalyze the dissociation of GDP from this protein. This protein could regulate actin polymerization through its direct binding to Neural Wiskott-Aldrich syndrome protein (N-WASP), which subsequently activates Arp2/3 complex. Alternative splicing of this gene results in multiple transcript variants.

Note: This product is for in vitro research use only