

## RALA Antibody

Catalog No: #36744

Orders: [order@signalwayantibody.com](mailto:order@signalwayantibody.com)Support: [tech@signalwayantibody.com](mailto:tech@signalwayantibody.com)

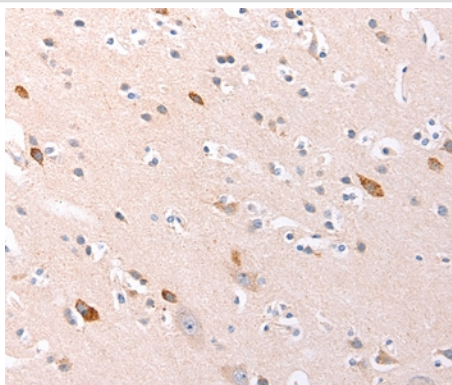
## Description

Product Name	RALA Antibody
Host Species	Rabbit
Clonality	Polyclonal
Purification	Antigen affinity purification.
Applications	IHC
Species Reactivity	Hu
Specificity	The antibody detects endogenous levels of total RALA protein.
Immunogen Type	Peptide
Immunogen Description	Synthetic peptide corresponding to a region derived from internal residues of human v-ral simian leukemia viral oncogene homolog A (ras related)
Target Name	RALA
Other Names	RAL
Accession No.	Swiss-Prot#: P11233NCBI Gene ID: 5898Gene Accssion: NP_005393.2
Uniprot	P11233
GeneID	5898;
Concentration	0.6mg/ml
Formulation	Rabbit IgG in pH7.4 PBS, 0.05% NaN <sub>3</sub> , 40% Glycerol.
Storage	Store at -20°C

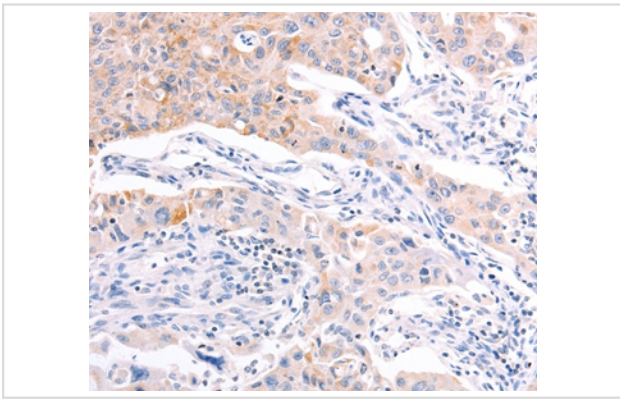
## Application Details

Immunohistochemistry: 1:15-1:50

## Images



Immunohistochemical analysis of paraffin-embedded Human brain tissue using #36744 at dilution 1/20.



Immunohistochemical analysis of paraffin-embedded Human liver cancer tissue using #36744 at dilution 1/20.

## Background

The product of this gene belongs to the small GTPase superfamily, Ras family of proteins. GTP-binding proteins mediate the transmembrane signaling initiated by the occupancy of certain cell surface receptors. This gene encodes a low molecular mass ras-like GTP-binding protein that shares about 50% similarity with other ras proteins.

Note: This product is for in vitro research use only