

## RAB5C Antibody

Catalog No: #36745

Orders: [order@signalwayantibody.com](mailto:order@signalwayantibody.com)Support: [tech@signalwayantibody.com](mailto:tech@signalwayantibody.com)

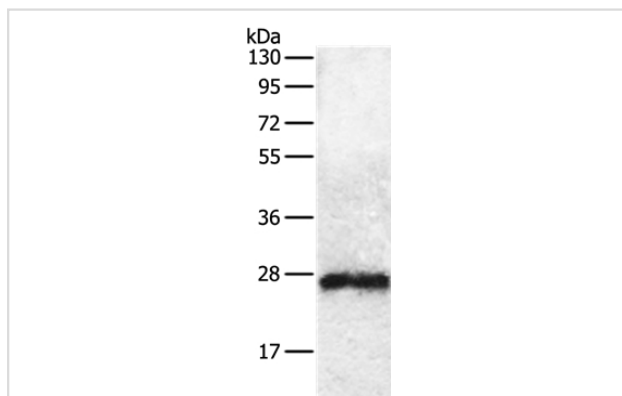
## Description

Product Name	RAB5C Antibody
Host Species	Rabbit
Clonality	Polyclonal
Purification	Antigen affinity purification.
Applications	WB
Species Reactivity	Hu Ms
Specificity	The antibody detects endogenous levels of total RAB5C protein.
Immunogen Type	Peptide
Immunogen Description	Synthetic peptide corresponding to a region derived from internal residues of human Ras-related protein Rab-5C
Target Name	RAB5C
Other Names	RABL; L1880; RAB5L; RAB5CL
Accession No.	Swiss-Prot#: P51148NCBI Gene ID: 5878Gene Accssion: NP_004574
Uniprot	P51148
GeneID	5878;
SDS-PAGE MW	24kd
Concentration	0.4mg/ml
Formulation	Rabbit IgG in pH7.4 PBS, 0.05% NaN <sub>3</sub> , 40% Glycerol.
Storage	Store at -20°C

## Application Details

Western blotting: 1:200-1:1000

## Images



Gel: 10%SDS-PAGE  
 Lysates (from left to right): Mouse brain tissue  
 Amount of lysate: 30ug per lane  
 Primary antibody: 1/200 dilution  
 Secondary antibody dilution: 1/8000  
 Exposure time: 1 minute

## Background

The protein is a member of the Rab protein family. Members of the Rab protein family are small GTPases of the Ras superfamily that are thought to

ensure fidelity in the process of docking and/or fusion of vesicles with their correct acceptor compartment .The funtion is protein transport,Probably involved in vesicular traffic.

---

Note: This product is for in vitro research use only