

RAB3D Antibody

Catalog No: #36746

Orders: order@signalwayantibody.comSupport: tech@signalwayantibody.com

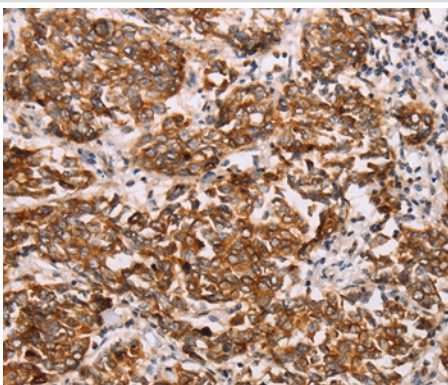
Description

Product Name	RAB3D Antibody
Host Species	Rabbit
Clonality	Polyclonal
Purification	Antigen affinity purification.
Applications	IHC
Species Reactivity	Hu
Specificity	The antibody detects endogenous levels of total RAB3D protein.
Immunogen Type	Peptide
Immunogen Description	Synthetic peptide corresponding to a region derived from internal residues of human RAB3D, member RAS oncogene family
Target Name	RAB3D
Other Names	GOV; D2-2; RAB16; RAD3D
Accession No.	Swiss-Prot#: O95716 NCBI Gene ID: 9545Gene Accssion: NP_004274
Uniprot	O95716
GeneID	9545;
Concentration	1.1mg/ml
Formulation	Rabbit IgG in pH7.4 PBS, 0.05% NaN ₃ , 40% Glycerol.
Storage	Store at -20°C

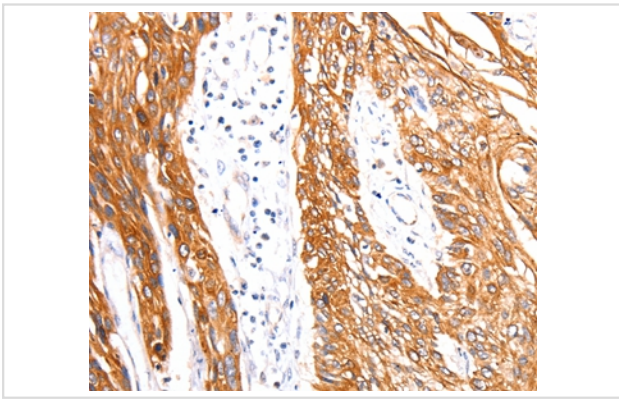
Application Details

Immunohistochemistry: 1:25-1:100

Images



Immunohistochemical analysis of paraffin-embedded Human breast cancer tissue using #36746 at dilution 1/27.



Immunohistochemical analysis of paraffin-embedded Human esophagus cancer tissue using #36746 at dilution 1/27.

Background

The RAB3D cDNA encodes a 24-kD protein as determined by in vitro translation. The deduced 219-amino acid sequence shows highest homology to the RAB3 subfamily of low molecular mass GTP-binding proteins. Northern blot analysis of various human hematopoietic cell lines showed a single transcript of 4.1 kb present at variable levels in each cell line, with highest expression in granulocytic lines. RAB3D was also highly expressed in YJ and HL-60 cells in response to retinoic acid treatment.

Note: This product is for in vitro research use only