

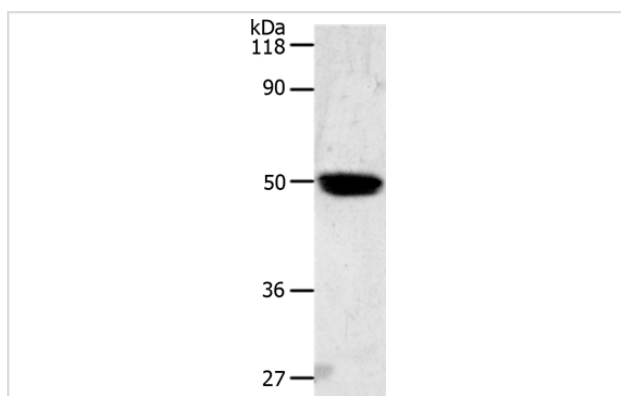
Description

Product Name	LOX Antibody
Host Species	Rabbit
Clonality	Polyclonal
Purification	Antigen affinity purification.
Applications	WB
Species Reactivity	Hu Ms
Specificity	The antibody detects endogenous levels of total LOX protein.
Immunogen Type	Peptide
Immunogen Description	Synthetic peptide corresponding to a region derived from internal residues of human Lysyl oxidase
Target Name	LOX
Other Names	LYOX;Lysyl oxidase;Protein-lysine 6-oxidase
Accession No.	Swiss-Prot#: P28300NCBI Gene ID: 4015Gene Accssion: NP_002308
Uniprot	P28300
GeneID	4015;
SDS-PAGE MW	47kd
Concentration	0.5mg/ml
Formulation	Rabbit IgG in pH7.4 PBS, 0.05% NaN ₃ , 40% Glycerol.
Storage	Store at -20°C

Application Details

Western blotting: 1:500-1:2000

Images



Gel: 10%SDS-PAGE
 Lysates (from left to right): Mouse liver tissue
 Amount of lysate: 60ug per lane
 Primary antibody: 1/400 dilution
 Secondary antibody dilution: 1/8000
 Exposure time: 1 minute

Background

The protein encoded by this gene is an extracellular copper enzyme that initiates the crosslinking of collagens and elastin. The enzyme catalyzes oxidative deamination of the epsilon-amino group in certain lysine and hydroxylysine residues of collagens and lysine residues of elastin. In addition to

crosslinking extracellular matrix proteins, the encoded protein may have a role in tumor suppression. Defects in this gene are a cause of autosomal recessive cutis laxa type I (CL type I). Two transcript variants encoding different isoforms have been found for this gene.

Note: This product is for in vitro research use only