

Creb (Phospho-Ser133) Rabbit mAb

Catalog No: #14124

Package Size: #14124-1 50ul #14124-2 100ul

Orders: order@signalwayantibody.comSupport: tech@signalwayantibody.com

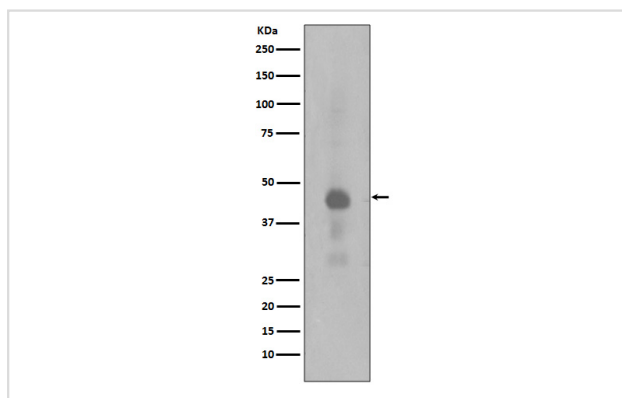
Description

| | |
|-----------------------|--|
| Product Name | Creb (Phospho-Ser133) Rabbit mAb |
| Host Species | Rabbit |
| Clonality | Monoclonal |
| Isotype | Rabbit IgG |
| Purification | Affinity-chromatography |
| Applications | WB IHC ICC/IF IP FC |
| Species Reactivity | Human Mouse Rat |
| Specificity | Phospho-Creb (S133) Antibody detects endogenous levels of total Phospho-Creb (S133) |
| Immunogen Description | A synthesized peptide derived from human Phospho-Creb (S133) |
| Conjugates | Unconjugated |
| Other Names | cAMP responsive element binding protein 1; CREB1; CREB-1 |
| Accession No. | Uniprot:P16220 |
| Calculated MW | 46kDa |
| Formulation | Rabbit IgG in phosphate buffered saline , pH 7.4, 150mM NaCl, 0.02% sodium azide and 50% glycerol. |
| Storage | Store at +4 Λ C short term. Store at -20 Λ C long term. Avoid freeze / thaw cycle. |

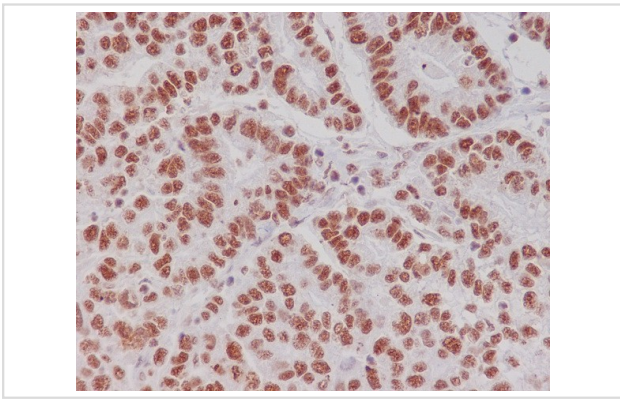
Application Details

WB:1:500~1:2000IHC:1:50~1:200ICC/IF:1:50~1:200IP:1:40FC:1:40

Images



Western blot analysis of Phospho-Creb(Ser133) expression in HeLa cell lysates treated with Calyculin A.



Immunohistochemical analysis of paraffin-embedded human gastric carcinoma, using Phospho-Creb (S133) Antibody.

Note: This product is for in vitro research use only and is not intended for use in humans or animals.