

# Histone H3 (Phospho-Thr3) Rabbit mAb

Catalog No: #14135

Package Size: #14135-1 50ul #14135-2 100ul

## Description

Product Name	Histone H3 (Phospho-Thr3) Rabbit mAb
Host Species	Rabbit
Clonality	Monoclonal
Clone No.	SR1239
Isotype	Rabbit IgG
Purification	Affinity-chromatography
Applications	WB, ICC/IF, IHC
Species Reactivity	Human
Specificity	Phospho-Histone H3 (T3) Antibody detects endogenous levels of total Phospho-Histone H3 (T3)
Immunogen Description	A synthesized peptide derived from human Phospho-Histone H3 (T3)
Conjugates	Unconjugated
Other Names	H3 histone family, member A; H3/A; H31; H3FA; H3FB; H3FC; H3FD; H3FF; H3FH; H3FI; H3FJ; H3FK; H3FL; HIST1H3A
Accession No.	Uniprot:P84243
Calculated MW	Predicted band size: 15 kDa
SDS-PAGE MW	Observed band size: 16 kDa
Formulation	Rabbit IgG in phosphate buffered saline , pH 7.4, 150mM NaCl, 0.02% sodium azide and 50% glycerol.
Storage	Store at +4Λ C short term. Store at -20Λ C long term. Avoid freeze / thaw cycle.

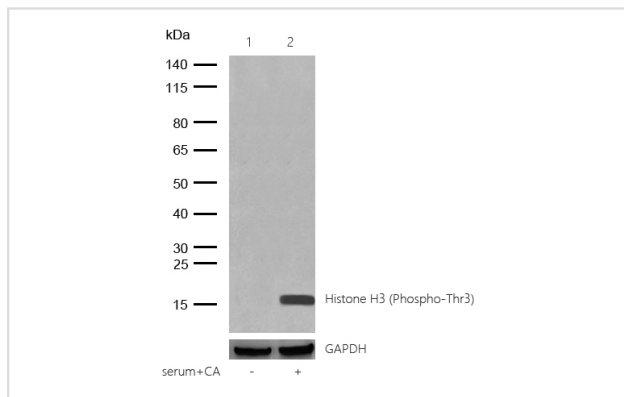
## Application Details

WB: 1:500-1:2000

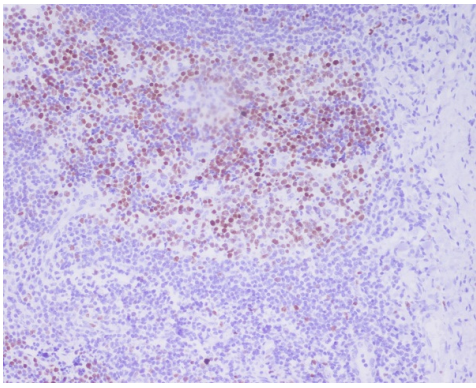
ICC/IF: 1:50-1:200

IHC: 1:50-1:200

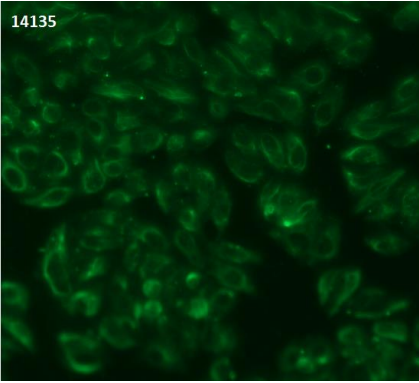
## Images



All lanes :Histone H3 (Phospho-Thr3) Rabbit mAb at 1/1k dilution  
 Lane 1 : HeLa whole cell lysates  
 Lane 2 : HeLa treated with 10% serum and 100nM Calyculin A for 30min whole cell lysates  
 Lysates/proteins at 20 µg per lane.  
 Secondary All lanes : Goat Anti-Rabbit IgG H&L (HRP) at 1/20000 dilution  
 Predicted band size: 15 kDa Observed band size: 16 kDa  
 Exposure time: 5 seconds



Formalin-fixed, paraffin-embedded human tonsil tissue stained for Histone H3 (Phospho-Thr3) using 14135 at 1/100 dilution in immunohistochemical analysis.



Immunocytochemistry/ Immunofluorescence Histone H3 (Phospho-Thr3) antibody (14135)  
ICC/IF staining of Histone H3 (Phospho-Thr3) in Hela cells. Cells were fixed with 4% Paraformaldehyde permeabilized with 0.1% Triton X-100. Samples were incubated with 14135 at a working dilution of 1/100. The secondary antibody was Alexa FluorB 488 goat anti rabbit, used at a dilution of 1/500.

---

Note: This product is for in vitro research use only and is not intended for use in humans or animals.