

Histone H3 (Phospho-Ser10) Rabbit mAb

Catalog No: #14140

Package Size: #14140-1 50ul #14140-2 100ul

Orders: order@signalwayantibody.comSupport: tech@signalwayantibody.com

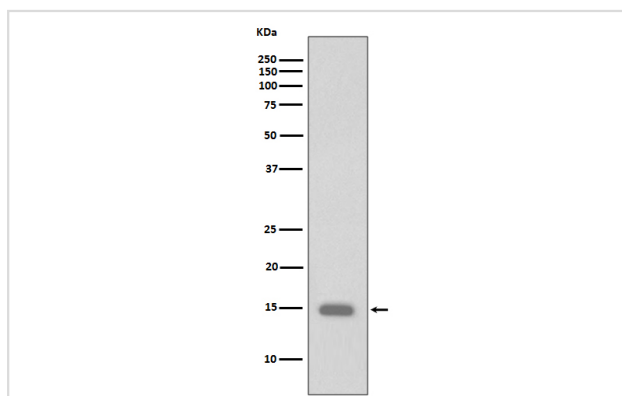
Description

Product Name	Histone H3 (Phospho-Ser10) Rabbit mAb
Host Species	Rabbit
Clonality	Monoclonal
Isotype	Rabbit IgG
Purification	Affinity-chromatography
Applications	WB IHC ICC/IF IP
Species Reactivity	Human Mouse Rat
Specificity	Phospho-Histone H3 (S10) Antibody detects endogenous levels of total Phospho-Histone H3 (S10)
Immunogen Description	A synthesized peptide derived from human Phospho-Histone H3 (S10)
Conjugates	Unconjugated
Other Names	H3 histone, family 3A; H3 histone, family 3B (H3.3B); H3.3A; H3.3B; H33; H3F3; H3F3A; H3F3B; Histone H3.3;
Accession No.	Uniprot:P68431
Calculated MW	15kDa
Formulation	Rabbit IgG in phosphate buffered saline , pH 7.4, 150mM NaCl, 0.02% sodium azide and 50% glycerol.
Storage	Store at +4 Λ C short term. Store at -20 Λ C long term. Avoid freeze / thaw cycle.

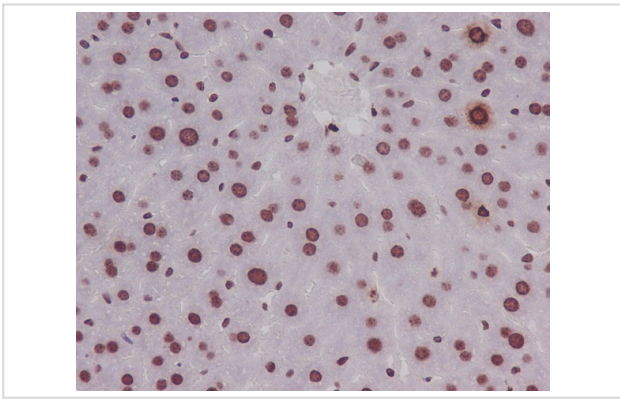
Application Details

WB:1:1000~1:2000IHC:1:50~1:200ICC/IF:1:50~1:200IP:1:50

Images



Western blot analysis of Phospho-Histone H3 (S10) expression in HeLa cell lysate treated with calyculin A.



Immunohistochemical analysis of paraffin-embedded mouse liver, using Phospho-Histone H3 (S10) Antibody.

Note: This product is for in vitro research use only and is not intended for use in humans or animals.