

Pancreatic Lipase antibody

Catalog No: #22153

Package Size: #22153 100ul

Orders: order@signalwayantibody.comSupport: tech@signalwayantibody.com

Description

Product Name	Pancreatic Lipase antibody
Host Species	Rabbit
Clonality	Polyclonal
Purification	Purified by antigen-affinity chromatography.
Applications	WB IHC IF
Species Reactivity	Hu
Immunogen Type	Recombinant protein
Immunogen Description	Recombinant protein fragment contain a sequence corresponding to a region within amino acids 21 and 270 of Pancreatic Lipase
Conjugates	Unconjugated
Target Name	Pancreatic Lipase
Accession No.	Swiss-Prot:P16233Gene ID:5406
Concentration	1mg/ml
Formulation	Supplied in 0.1M Tris-buffered saline with 10% Glycerol (pH7.0). 0.01% Thimerosal was added as a preservative.
Storage	Store at -20°C for long term preservation (recommended). Store at 4°C for short term use.

Application Details

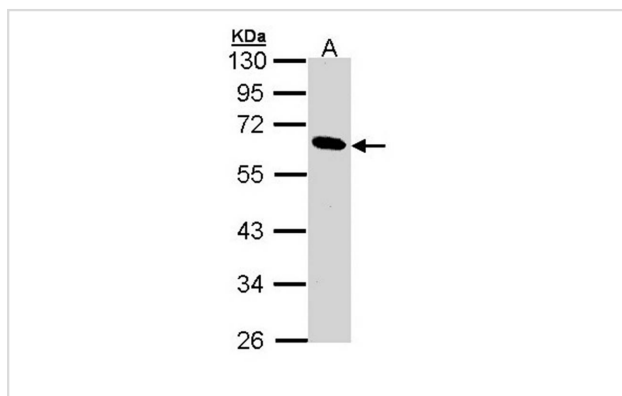
Predicted MW: 51kd

Western blotting: 1:500-1:3000

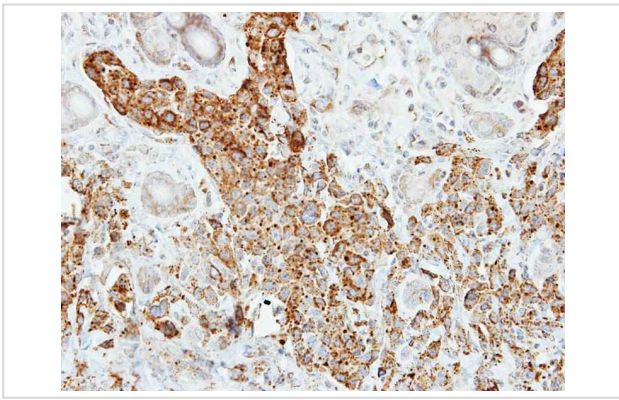
Immunohistochemistry: 1:50-1:500

Immunofluorescence: 1:100-1:200

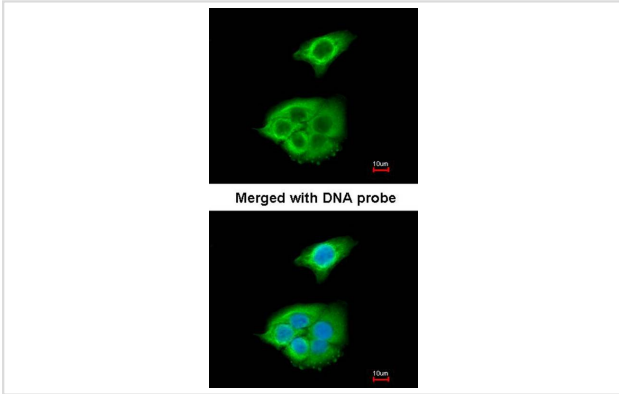
Images



Sample (30 ug of whole cell lysate)
A: 293T
10% SDS PAGE
Primary antibody diluted at 1: 1000



Immunohistochemical analysis of paraffin-embedded SCM-1 xenograft, using Pancreatic Lipase antibody at 1: 500 dilution.



Immunofluorescence analysis of paraformaldehyde-fixed A549, using Pancreatic Lipase antibody at 1: 200 dilution.

Background

This gene is a member of the lipase gene family. It encodes a carboxyl esterase that hydrolyzes insoluble, emulsified triglycerides, and is essential for the efficient digestion of dietary fats. This gene is expressed specifically in the pancreas. [provided by RefSeq]

Note: This product is for in vitro research use only and is not intended for use in humans or animals.