

Flotillin-2 antibody

Catalog No: #22214

Package Size: #22214 100ul

Orders: order@signalwayantibody.com

Support: tech@signalwayantibody.com

Description

Product Name	Flotillin-2 antibody
Host Species	Rabbit
Clonality	Polyclonal
Purification	Purified by antigen-affinity chromatography.
Applications	WB IHC IF
Species Reactivity	Hu
Immunogen Type	Peptide
Immunogen Description	Synthetic peptide contain a sequence corresponding to a region within amino acids 365 and 428 of Flotillin-2
Conjugates	Unconjugated
Target Name	Flotillin-2
Accession No.	Swiss-Prot:Q14254Gene ID:2319
Concentration	1mg/ml
Formulation	Supplied in 1XPBS, 1%BSA, 20% Glycerol (pH7.0). 0.01% Thimerosal was added as a preservative.
Storage	Store at -20°C for long term preservation (recommended). Store at 4°C for short term use.

Application Details

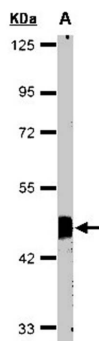
Predicted MW: 47kd

Western blotting: 1:500-1:3000

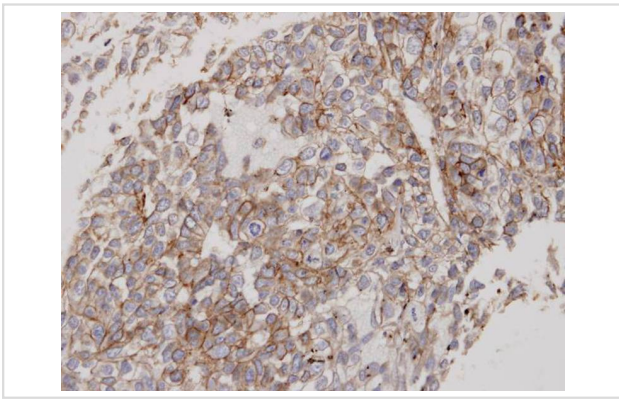
Immunohistochemistry: 1:100-1:250

Immunofluorescence: 1:100-1:200

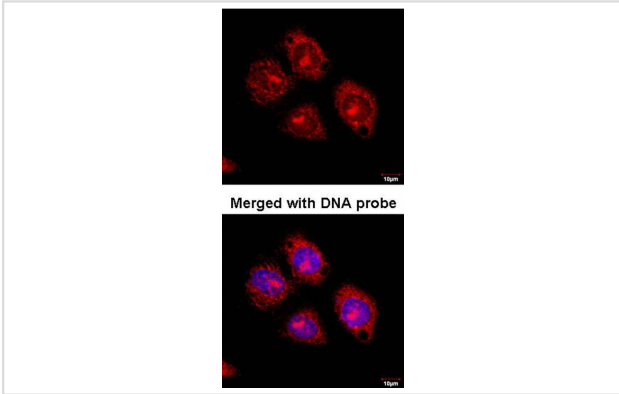
Images



Sample(30 ug of whole cell lysate)
A: HeLa S3
10% SDS PAGE
Primary antibody diluted at 1: 1000



Immunohistochemical analysis of paraffin-embedded Lung CA, using Flotillin-2 antibody at 1: 100 dilution.



Immunofluorescence analysis of paraformaldehyde-fixed HeLaS3, using Flotillin-2 antibody at 1: 100 dilution.

Background

Caveolae are small domains on the inner cell membrane involved in vesicular trafficking and signal transduction. This gene encodes a caveolae-associated, integral membrane protein, which is thought to function in neuronal signaling. [provided by RefSeq]

Note: This product is for in vitro research use only and is not intended for use in humans or animals.