

Vimentin Antibody

Catalog No: #33541

Package Size: #33541-1 50ul #33541-2 100ul

Description

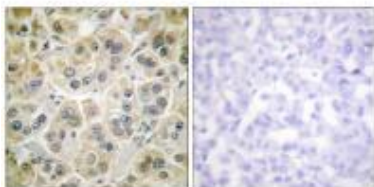
Product Name	Vimentin Antibody
Host Species	Rabbit
Clonality	Polyclonal
Purification	The antibody was affinity-purified from rabbit antiserum by affinity-chromatography using epitope-specific immunogen.
Applications	WB IHC
Species Reactivity	Hu Ms Rt
Specificity	The antibody detects endogenous levels of total vimentin protein.
Immunogen Type	Peptide
Immunogen Description	Synthesized peptide derived from Internal of human vimentin.
Conjugates	Unconjugated
Target Name	Vimentin
Other Names	VIME; vimentin;
Accession No.	Swiss-Prot: P08670NCBI Gene ID: 7431
SDS-PAGE MW	53kd
Concentration	1.0mg/ml
Formulation	Rabbit IgG in phosphate buffered saline (without Mg ²⁺ and Ca ²⁺), pH 7.4, 150mM NaCl, 0.02% sodium azide and 50% glycerol.
Storage	Store at -20°C

Application Details

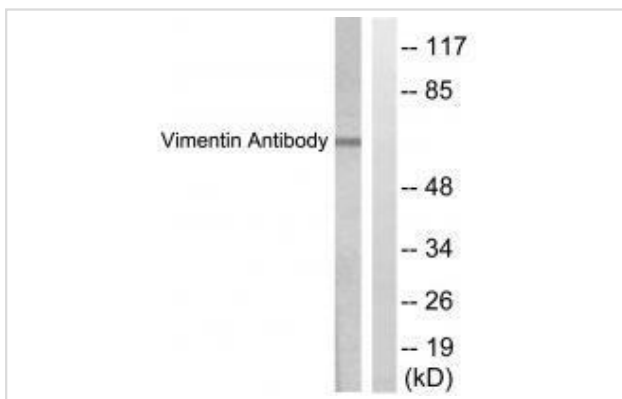
Western blotting: 1:500~1:3000

Immunohistochemistry: 1:50~1:100

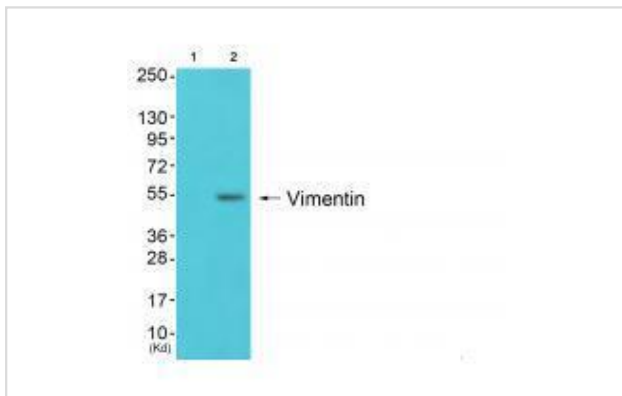
Images



Immunohistochemistry analysis of paraffin-embedded human colon carcinoma tissue using Vimentin antibody #33541.



Western blot analysis of extracts from HepG2 cells, treated with Adriamycin (0.5uM, 5hours), using Vimentin antibody #33541.



Western blot analysis of extracts from 293 cells (Lane 2), using Vimentin antibody #33541. The lane on the left is treated with synthesized peptide.

Background

Vimentins are class-III intermediate filaments found in various non-epithelial cells, especially mesenchymal cells. Vimentin is attached to the nucleus, endoplasmic reticulum, and mitochondria, either laterally or terminally. Involved with LARP6 in the stabilization of type I collagen mRNAs for CO1A1 and CO1A2.

WB Isaacs, J. Biol. Chem., Oct 1989; 264: 17953 - 17960.

Patric Turowski, Mol. Biol. Cell, Jun 1999; 10: 1997.

Melanie L. Styers, J. Cell Sci., Sep 2006; 119: 3643 - 3654.

Qing-Fen Li, J. Biol. Chem., Nov 2006; 281: 34716 - 34724.

Published Papers

el at., FOXQ1 promotes pancreatic cancer cell proliferation, tumor stemness, invasion and metastasis through regulation of LDHA-mediated aerobic glycolysis InCell Death DisOn2023 Oct 24byChanghao Wu , Chenglong Zheng et al..PMID:37875474, , (2023)

[PMID:37875474](#)

Yuanfan Chen;Jiaying Liu;Shaowen Zhong;Tianwu Zhang;Jin Yuan;Jing Zhang;Ying Chen;Jian Liang;Yonger Chen;Shaozhen Hou;Haiyang Huang;Jie Gao el at., Monotropein inhibits epithelial-mesenchymal transition in chronic colitis via the mTOR/P70S6K pathway., , (2025)

[PMID:40041493](#)

Note: This product is for in vitro research use only and is not intended for use in humans or animals.