

ITGA6 Antibody

Catalog No: #37155

Package Size: #37155 100ul

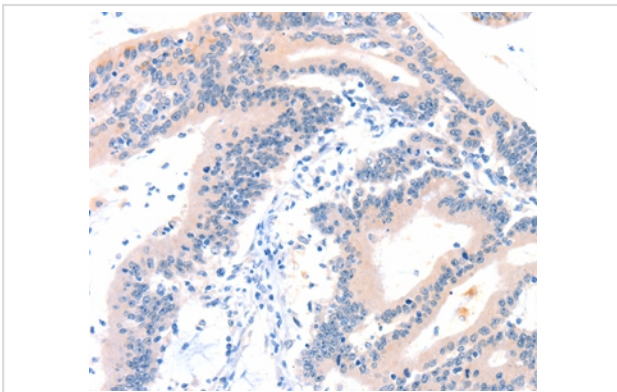
Description

Product Name	ITGA6 Antibody
Host Species	Rabbit
Clonality	Polyclonal
Purification	Antigen affinity purification.
Applications	IHC
Species Reactivity	Hu Ms
Specificity	The antibody detects endogenous levels of total ITGA6 protein.
Immunogen Type	Peptide
Immunogen Description	Synthetic peptide corresponding to a region derived from internal residues of human integrin, alpha 6
Conjugates	Unconjugated
Target Name	ITGA6
Other Names	CD49f; VLA-6; ITGA6B
Accession No.	Swiss-Prot#: P23229NCBI Gene ID: 3655Gene Accssion: NP_000201
Concentration	1.7mg/ml
Formulation	Rabbit IgG in pH7.4 PBS, 0.05% NaN ₃ , 40% Glycerol.
Storage	Store at -20°C

Application Details

Immunohistochemistry: 1:25-1:100

Images



Immunohistochemical analysis of paraffin-embedded Human colon cancer tissue using #37155 at dilution 1/50.

Background

The ITGA6 protein product is the integrin alpha chain alpha 6. Integrins are integral cell-surface proteins composed of an alpha chain and a beta chain. A given chain may combine with multiple partners resulting in different integrins. For example, alpha 6 may combine with beta 4 in the integrin referred to as TSP180, or with beta 1 in the integrin VLA-6. Integrins are known to participate in cell adhesion as well as cell-surface mediated

signalling. Two transcript variants encoding different isoforms have been found for this gene.

Published Papers

Zeng Xu; Jiancheng Zheng; Ying Zhang; Huiqiao Wu; Bin Sun; Ke Zhang; Jianxi Wang; Fazhi Zang; Xingkai Zhang; Lei Guo; Xiaodong Wu et al., Increased Expression of Integrin Alpha 6 in Nucleus Pulposus Cells in Response to High Oxygen Tension Protects against Intervertebral Disc Degeneration, , (2021)

[PMID:34707783](#)

Note: This product is for in vitro research use only and is not intended for use in humans or animals.