

CC043 rabbit pAb

Catalog No: #49151

Package Size: #49151-1 50ul #49151-2 100ul

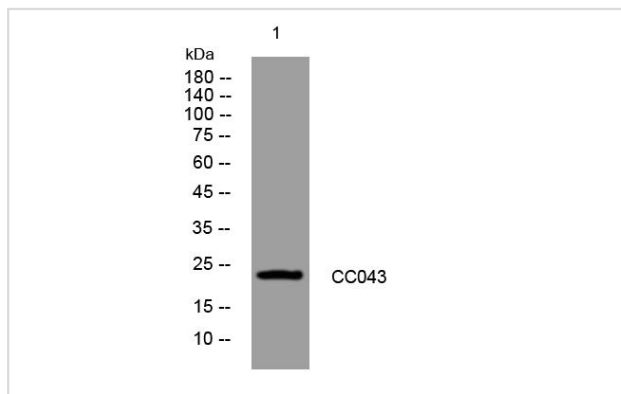
Description

Product Name	CC043 rabbit pAb
Host Species	Rabbit
Clonality	Polyclonal
Isotype	IgG
Purification	The antibody was affinity-purified from rabbit antiserum by affinity-chromatography using epitope-specific immunogen.
Applications	WB
Species Reactivity	Human;Mouse
Specificity	This antibody detects endogenous levels of CC043 at Human/Mouse
Immunogen Description	Synthesized peptide derived from human CC043
Conjugates	Unconjugated
Target Name	C3orf43
Calculated MW	24kD
Concentration	1 mg/ml
Formulation	Liquid in PBS containing 50% glycerol, 0.5% BSA and 0.02% sodium azide.
Storage	Store at -20°C/1 year

Application Details

WB 1 μ O 500-2000

Images



Western blot analysis of lysates from HpeG2 cells, primary antibody was diluted at 1:1000, 4° over night

Note: This product is for in vitro research use only and is not intended for use in humans or animals.