

GEMIN5 Rabbit Polyclonal Antibody

Catalog No: #54375

Package Size: #54375-1 50ul #54375-2 100ul

Orders: order@signalwayantibody.comSupport: tech@signalwayantibody.com

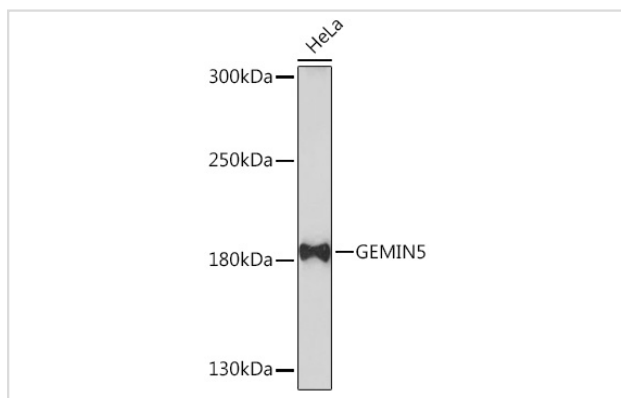
Description

Product Name	GEMIN5 Rabbit Polyclonal Antibody
Host Species	Rabbit
Clonality	Polyclonal
Isotype	IgG
Purification	Affinity purification
Applications	WB,IHC
Species Reactivity	Human,Mouse,Rat
Immunogen Description	Recombinant fusion protein of human GEMIN5 (NP_056280.2).
Conjugates	Unconjugated
Other Names	GEMIN5;GEMIN-5
Accession No.	Swiss Prot:Q8TEQ6Gene ID:25929
Calculated MW	168kDa
SDS-PAGE MW	180kDa
Formulation	Buffer: PBS with 0.02% sodium azide,50% glycerol,pH7.3.
Storage	Store at -20°C. Avoid freeze / thaw cycles.

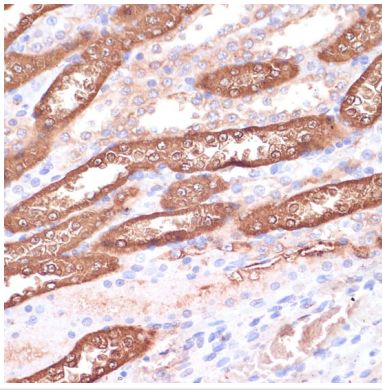
Application Details

WB □ 1:2000 - 1:5000 IHC □ 1:50 - 1:200

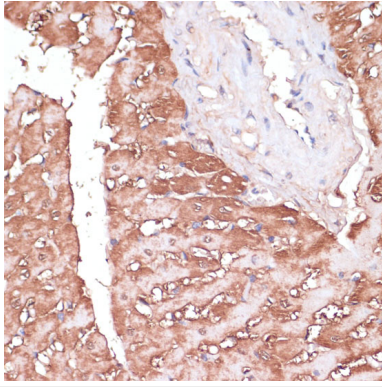
Images



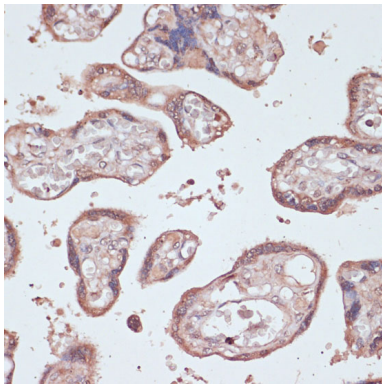
Western blot analysis of extracts of HeLa cells, using GEMIN5 Rabbit pAb.



Immunohistochemistry of paraffin-embedded rat kidney using GEMIN5 antibody.



Immunohistochemistry of paraffin-embedded rat heart using GEMIN5 antibody.



Immunohistochemistry of paraffin-embedded human placenta using GEMIN5 antibody.

Background

This gene encodes a WD repeat protein that is a component of the survival of motor neurons (SMN) complex. The SMN complex plays a critical role in mRNA splicing through the assembly of spliceosomal small nuclear ribonucleoproteins (snRNPs), and may also mediate the assembly and transport of other classes of ribonucleoproteins. The encoded protein is the snRNA-binding component of the SMN complex. Dysregulation of this gene may play a role in alternative mRNA splicing and tumor cell motility. Alternatively spliced transcript variants encoding multiple isoforms have been observed for this gene.

Note: This product is for in vitro research use only and is not intended for use in humans or animals.