

## SSX5 Rabbit Polyclonal Antibody

Catalog No: #55303

Package Size: #55303-1 50ul #55303-2 100ul

Orders: [order@signalwayantibody.com](mailto:order@signalwayantibody.com)Support: [tech@signalwayantibody.com](mailto:tech@signalwayantibody.com)

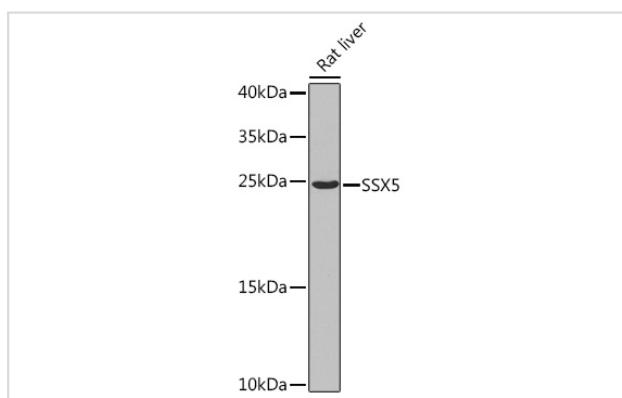
## Description

Product Name	SSX5 Rabbit Polyclonal Antibody
Host Species	Rabbit
Clonality	Polyclonal
Isotype	IgG
Purification	Affinity purification
Applications	WB
Species Reactivity	Human,Mouse,Rat
Immunogen Description	Recombinant fusion protein of human SSX5 (NP_066295.3).
Conjugates	Unconjugated
Other Names	SSX5
Accession No.	Uniprot:O60225GeneID:6758
Calculated MW	21kDa/26kDa
SDS-PAGE MW	22kDa
Formulation	PBS with 0.02% sodium azide,50% glycerol,pH7.3.
Storage	Store at -20°C. Avoid freeze / thaw cycles.

## Application Details

WB □ 1:500 - 1:2000

## Images



Western blot analysis of extracts of Rat liver, using SSX5 Rabbit pAb.

## Background

The product of this gene belongs to the family of highly homologous synovial sarcoma X (SSX) breakpoint proteins. These proteins may function as transcriptional repressors. They are also capable of eliciting spontaneous humoral and cellular immune responses in cancer patients, and are potentially useful targets in cancer vaccine-based immunotherapy. While some of the related SSX genes are involved in t(X;18)(p11.2;q11.2) translocations that are characteristically found in all synovial sarcomas, this gene does not appear to be involved in such translocations. Two transcript

variants encoding distinct isoforms have been identified for this gene.

---

Note: This product is for in vitro research use only and is not intended for use in humans or animals.