

# NDUFA2 Rabbit Polyclonal Antibody

Catalog No: #55437

Package Size: #55437-1 50ul #55437-2 100ul

Orders: [order@signalwayantibody.com](mailto:order@signalwayantibody.com)Support: [tech@signalwayantibody.com](mailto:tech@signalwayantibody.com)

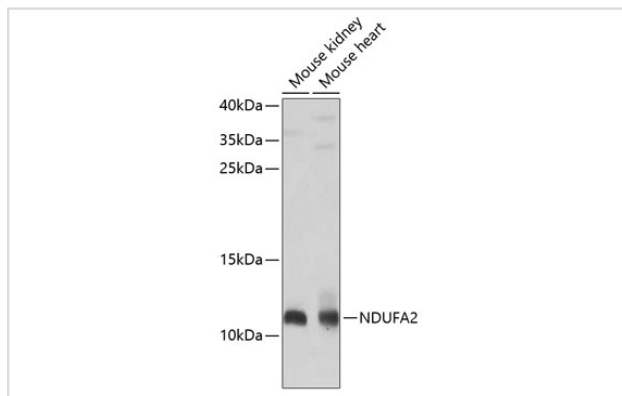
## Description

Product Name	NDUFA2 Rabbit Polyclonal Antibody
Host Species	Rabbit
Clonality	Polyclonal
Isotype	IgG
Purification	Affinity purification
Applications	WB,IF
Species Reactivity	Human,Mouse,Rat
Immunogen Description	Recombinant fusion protein of human NDUFA2 (NP_002479.1).
Conjugates	Unconjugated
Other Names	NDUFA2;B8;CD14;CIB8
Accession No.	Uniprot:O43678GeneID:4695
Calculated MW	8kDa/10kDa
SDS-PAGE MW	11kDa
Formulation	PBS with 0.02% sodium azide,50% glycerol,pH7.3.
Storage	Store at -20°C. Avoid freeze / thaw cycles.

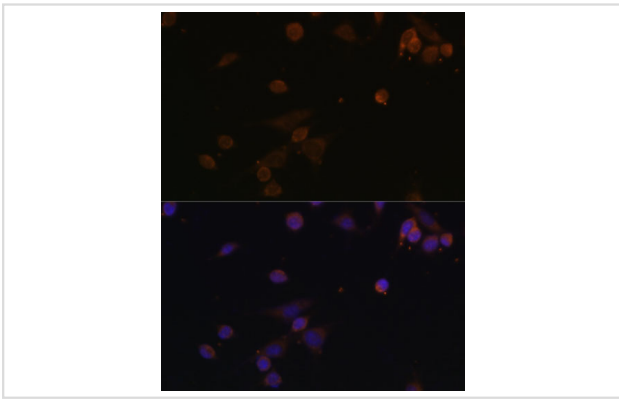
## Application Details

WB □ 1:500 - 1:2000 IF □ 1:50 - 1:200

## Images



Western blot analysis of extracts of various cell lines, using NDUFA2 antibody.



Immunofluorescence analysis of NIH/3T3 cells using NDUFA2 antibody.

## Background

The encoded protein is a subunit of the hydrophobic protein fraction of the NADH:ubiquinone oxidoreductase (complex 1), the first enzyme complex in the electron transport chain located in the inner mitochondrial membrane, and may be involved in regulating complex I activity or its assembly via assistance in redox processes. Mutations in this gene are associated with Leigh syndrome, an early-onset progressive neurodegenerative disorder. Alternative splicing results in multiple transcript variants.

Note: This product is for in vitro research use only and is not intended for use in humans or animals.