

## GLUT3 Rabbit Polyclonal Antibody

Catalog No: #55439

Package Size: #55439-1 50ul #55439-2 100ul

Orders: [order@signalwayantibody.com](mailto:order@signalwayantibody.com)Support: [tech@signalwayantibody.com](mailto:tech@signalwayantibody.com)

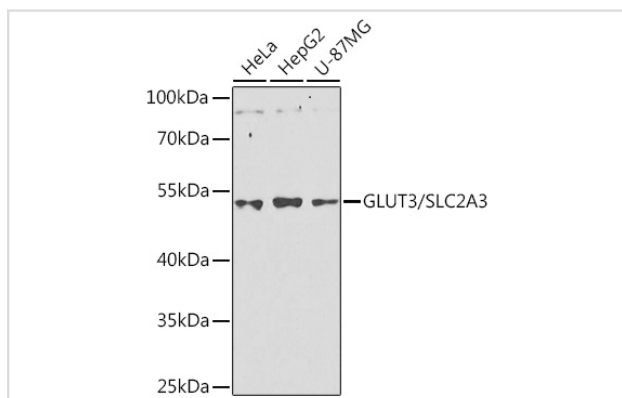
## Description

Product Name	GLUT3 Rabbit Polyclonal Antibody
Host Species	Rabbit
Clonality	Polyclonal
Isotype	IgG
Purification	Affinity purification
Applications	WB,IHC
Species Reactivity	Human,Mouse,Rat
Immunogen Description	A synthetic peptide of human GLUT3/SLC2A3 (NP_008862.1).
Conjugates	Unconjugated
Other Names	SLC2A3;GLUT3
Accession No.	Uniprot:P11169GeneID:6515
Calculated MW	53kDa
SDS-PAGE MW	53kDa
Formulation	PBS with 0.02% sodium azide,50% glycerol,pH7.3.
Storage	Store at -20°C. Avoid freeze / thaw cycles.

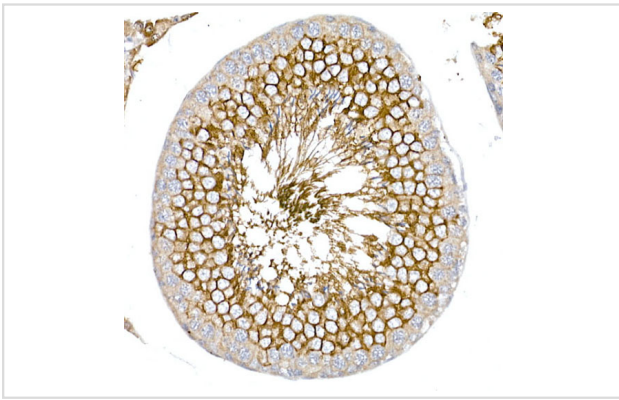
## Application Details

WB □ 1:500 - 1:2000 IHC □ 1:50 - 1:200

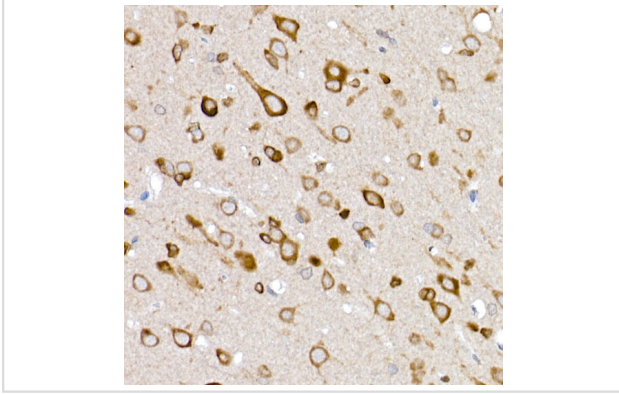
## Images



Western blot analysis of extracts of various cell lines, using GLUT3/SLC2A3 Antibody.



Immunohistochemistry of paraffin-embedded rat testis using GLUT3/SLC2A3 Rabbit pAb.



Immunohistochemistry of paraffin-embedded rat brain using GLUT3/SLC2A3 Rabbit pAb.

## Background

Facilitative glucose transporter that can also mediate the uptake of various other monosaccharides across the cell membrane. Mediates the uptake of glucose, 2-deoxyglucose, galactose, mannose, xylose and fucose, and probably also dehydroascorbate. Does not mediate fructose transport.

Note: This product is for in vitro research use only and is not intended for use in humans or animals.