

IL37 Rabbit Polyclonal Antibody

Catalog No: #55453

Package Size: #55453-1 50ul #55453-2 100ul

Orders: order@signalwayantibody.comSupport: tech@signalwayantibody.com

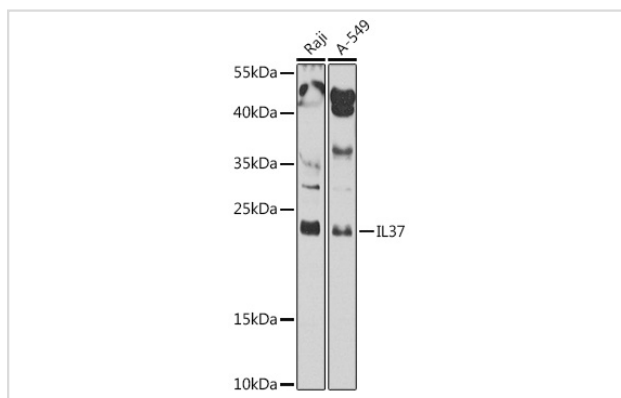
Description

Product Name	IL37 Rabbit Polyclonal Antibody
Host Species	Rabbit
Clonality	Polyclonal
Isotype	IgG
Purification	Affinity purification
Applications	WB
Species Reactivity	Human
Immunogen Description	Recombinant fusion protein of human IL37 (NP_055254.2).
Conjugates	Unconjugated
Other Names	IL37;FIL1;FIL1(ZETA);FIL1Z;IL-1F7;IL-1H;IL-1H4;IL-1RP1;IL-37;IL1F7;IL1H4;IL1RP1
Accession No.	Uniprot:Q9NZH6GeneID:27178
Calculated MW	17kDa/19kDa/21kDa/24kDa
SDS-PAGE MW	24kDa
Formulation	PBS with 0.02% sodium azide,50% glycerol,pH7.3.
Storage	Store at -20°C. Avoid freeze / thaw cycles.

Application Details

WB □ 1:500 - 1:2000

Images



Western blot analysis of extracts of various cell lines, using IL37 antibody.

Background

The protein encoded by this gene is a member of the interleukin 1 cytokine family. This cytokine can bind to, and may be a ligand for interleukin 18 receptor (IL18R1/IL-1Rrp). This cytokine also binds to interleukin 18 binding protein (IL18BP), an inhibitory binding protein of interleukin 18 (IL18), and subsequently forms a complex with IL18 receptor beta subunit, and through which it inhibits the activity of IL18. This gene along with eight other interleukin 1 family genes form a cytokine gene cluster on chromosome 2. Five alternatively spliced transcript variants encoding distinct isoforms have

been reported.

Note: This product is for in vitro research use only and is not intended for use in humans or animals.