

## RLF Antibody

Catalog No: #62182

Package Size: #62182 100ul

Orders: [order@signalwayantibody.com](mailto:order@signalwayantibody.com)Support: [tech@signalwayantibody.com](mailto:tech@signalwayantibody.com)

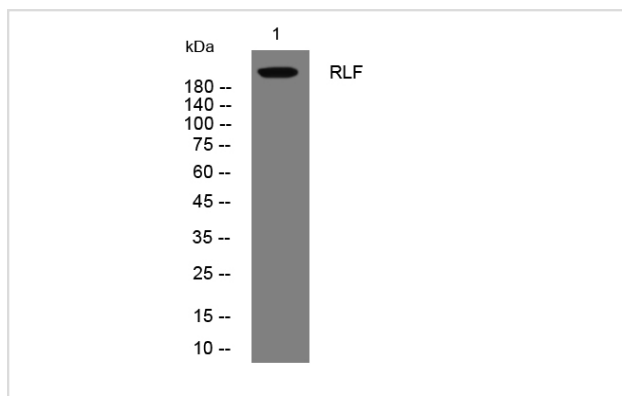
## Description

Product Name	RLF Antibody
Host Species	Rabbit
Clonality	Polyclonal
Purification	The antibody was affinity-purified from rabbit antiserum by affinity-chromatography using epitope-specific immunogen.
Applications	WB;IHC
Species Reactivity	Human
Specificity	The antibody detects endogenous level of total RLF protein
Immunogen Type	Peptide
Immunogen Description	Synthesized peptide derived from human RLF
Target Name	RLF
Calculated MW	Predicted band size: 211 kDa
Formulation	Liquid in PBS containing 50% glycerol, 0.5% BSA and 0.02% sodium azide.
Storage	Shipped at 4°C. Store at -20°C for one year. Avoid repeated freeze/thaw cycles.

## Application Details

WB 1:500-2000; IHC 1:50-300;

## Images



All lanes : RLF Antibody at 1/1k dilution

Lane 1 : AD293 cells

Lysates/proteins at 20 ug per lane.

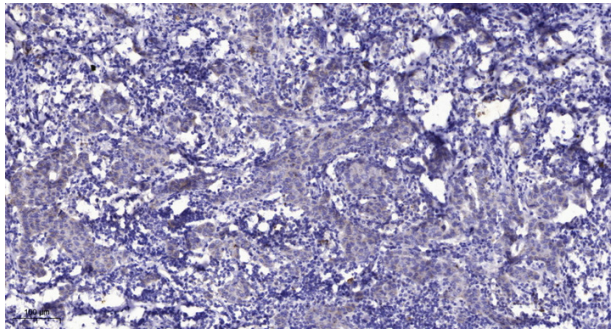
Secondary

All lanes : Goat Anti-Rabbit IgG H&amp;L (HRP) at 1/5000 dilution

Predicted band size: 211 kDa

Observed band size: 211 kDa

Exposure time: 34 seconds



Formalin-fixed, paraffin-embedded human Breast cancer stained for RLF Antibody was diluted at 1:200 dilution in immunohistochemical analysis.

---

Note: This product is for in vitro research use only and is not intended for use in humans or animals.