

MET Mouse mAb

Catalog No: #63929

Package Size: #63929-1 50ul #63929-2 100ul

Orders: order@signalwayantibody.com
 Support: tech@signalwayantibody.com

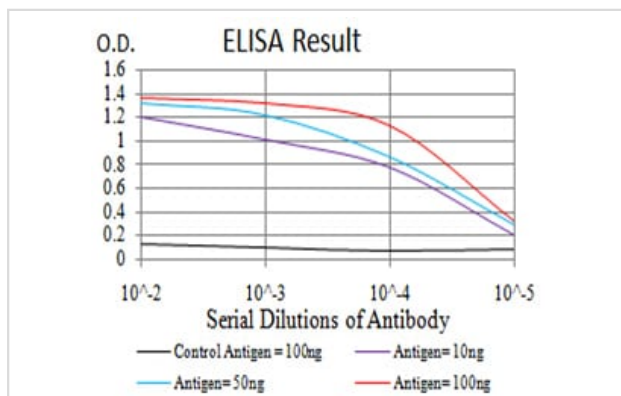
Description

Product Name	MET Mouse mAb
Host Species	Mouse
Clonality	Monoclonal
Isotype	Mouse IgG1
Applications	WB;IHC;IF;FC
Species Reactivity	Human,Monkey
Immunogen Description	Purified recombinant fragment of human MET (AA: 743-932) expressed in E. Coli.
Target Name	MET
Other Names	HGFR; AUTS9; RCCP2; c-Met; DFNB97
Accession No.	P08581
Calculated MW	155kDa
Formulation	Purified antibody in PBS with 0.05% sodium azide
Storage	Store at 4°C short term. Aliquot and store at -20°C long term. Avoid freeze/thaw cycles.

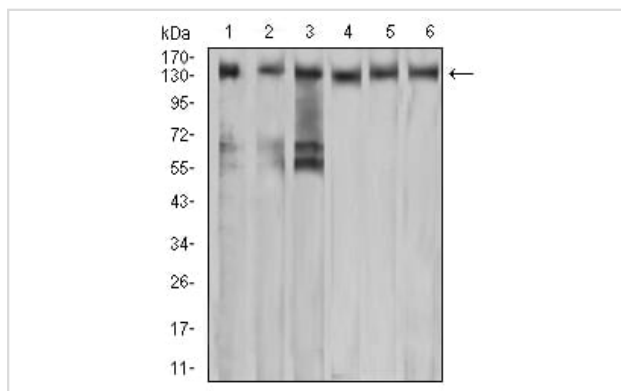
Application Details

WB:1/500 - 1/2000 IHC:1/200 - 1/1000 ICC:1/200 - 1/1000 FC:1/200 - 1/400 ELISA:1/10000

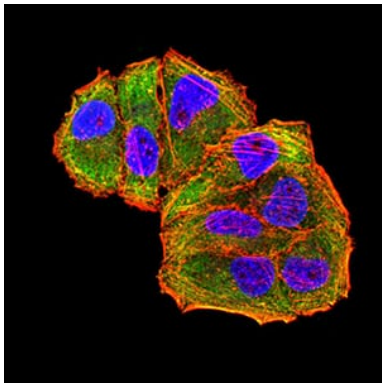
Images



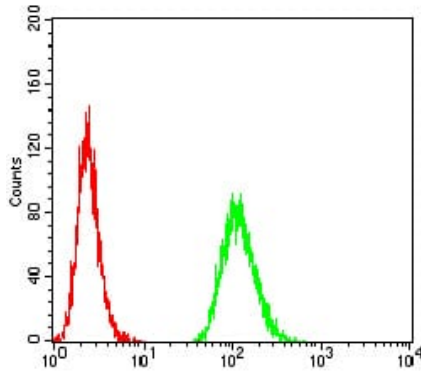
Black line: Control Antigen (100 ng);Purple line: Antigen (10ng); Blue line: Antigen (50 ng); Red line:Antigen (100 ng)



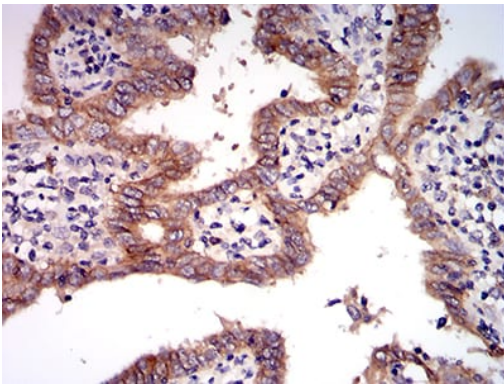
Western blot analysis using MET mouse mAb against A549 (1), COS7 (2), HeLa (3), HEK293 (4), HepG2 (5), and A431 (6) cell lysate.



Immunofluorescence analysis of HeLa cells using MET mouse mAb (green). Blue: DRAQ5 fluorescent DNA dye. Red: Actin filaments have been labeled with Alexa Fluor- 555 phalloidin. Secondary antibody from Fisher (Cat#: 35503)



Flow cytometric analysis of MCF-7 cells using MET mouse mAb (green) and negative control (red).



Immunohistochemical analysis of paraffin-embedded human endometrial cancer tissues using MET mouse mAb with DAB staining.

Note: This product is for in vitro research use only and is not intended for use in humans or animals.